



Mesa is about supporting what multiple teams – from executive to creative – need to make time-critical decisions anywhere in the world.



Mesa exceeds both the aesthetic and functional requirements of today's conference room, while remaining at our signature price point



furnishing excellence™

# Your IT department has never had it easier: a table designed for the technical needs of today's wired workplace

Mesa makes worldwide connectivity easy, with IT access integral to its design.



Mesa powers worldwide communication with a cutting edge wiring trough built right into the table. Separate channels organize voice and data cables, and entry points are located both on the surface and in the bases. The trough accommodates large amounts of voice/data and electrical wiring, powering up everyone at the table. Additional wire storage space is also in each base.

Your IT set up has never been easier, with easy access to troubleshooting and reconfigurations without additional cost to you. With cables out of sight, the surface remains uncluttered and conducive to focus and critical planning.

Multiple sizes are available, with finish options that mix and match, creating an innovative aesthetic that reflects Mesa's modern sensibility.

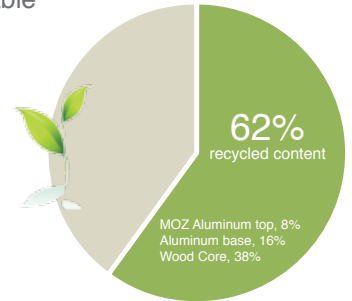
## Features:

- Separate channels organize power and data cables
- Brushed door openings for protection and easy access
- Bases also allow for wire entry and storage
- Custom veneer and metal inlays available

▲ An oversized wiring trough holds voice, data, and electrical outlets that are easily accessible through both the surface doors and bases. Separate channels keep data and power organized, for fast and uncomplicated connectivity.

Mesa is as green as it is innovative, with surfaces that offer air quality assurance and LEED point contributions for recycled content (see chart, right\*). Additional points are available if certified wood or rapidly renewable materials are specified. For more information on how your Mesa table can contribute to your LEED project, contact our Specifications Department at [spec@friant.com](mailto:spec@friant.com).

\*LEED point contributions will vary according to exact table specifications; chart references table shown on opposite page.



Customizing Mesa is easy with a myriad of materials, sizes and edge options.



## METAL OPTIONS



CLOUDS



COURSE GRAIN



MOZ metals are 80% post-industrial recycled aluminum

## VENEER & LAMINATE OPTIONS

\*more colors available; see price book for complete list



FUSION MAPLE



WILD CHERRY



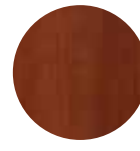
AMERICAN CHERRY



NATURAL MAPLE



ESPRESSO



BILTMORE CHERRY



DEEP CHERRY



WARM MAPLE



We use Wilson Art laminates, which are a paper-based product that meets indoor air quality standards



Our wood veneers are finished with a non-toxic water-based finish

For pricing, sizes and accessories, contact your sales consultant or visit [www.friant.com/mesa](http://www.friant.com/mesa)

[www.friant.com/mesa](http://www.friant.com/mesa)